

## Quick Details

Por favor, clique aqui para mais informações: [Fabricante de cama dobrável China](#)

Material	100% Poliéster
Largura	como a exigência do cliente
Inscrição	sapatos,sacos,pacotes,hometextile,colchão
<b>Item</b>	<b>Valor</b>
peso	60-250gsm
Capacidade de fornecimento	500000M/MÊS
Cor	Atendendo ao pedido
AGULHAS	7.10.14
Amostra	amostra grátis para enviar
Característica	Tratamento retardador de chama, respirável, antiderrapante
Padrão	Tingido, impressão
Pacote	Pacote de rolo
Pagamento	LC,DA,DP,TT e assim por diante

Tecido não tecido colado com costura é reciclado a partir de garrafas de resíduos pode ser amplamente utilizado em bolsa, cortina, colchão de rede de mola, sapatos e assim por diante.

Também oferecemos muitos tipos de produtos para sua escolha. Por favor, clique nestas palavras e encontre sua necessidade: [fita adesiva colchão tecido fabricantes](#)

## Product Details



[Colchão de impressão fábrica de tecidos Stichbond](#)

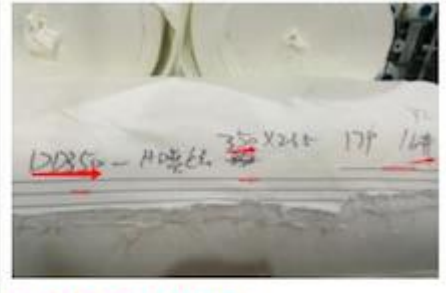
## Quality Control



**BEST MATERIAL**



**DETAILS NOTE DOWN**



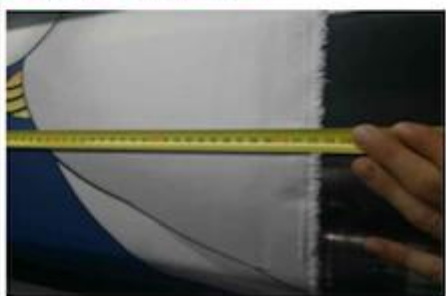
**DETAILS ON FABRIC**



**FABRIC FIRST TIME CHECKING**



**WEIGHT CHECKING**



**WIDTH CHECKING**



**DESIGN CHECKING**



**QUANTITY CHECKING**



**TRY BEST TO LOAD FULL**

## Our Factory



Packing



## Our Service

- 1,15 anos specailize em tecido e componentes de colchão
2. Qualidade primeiro com o melhor preço
3. Garanta a quantidade e o tempo de entrega
4. Continue aprimorando novos designs e novos produtos
5. Pesquise novo elemento de moda para o cliente
6. Misture todos tipos de produtos em um recipiente
7. Manter Informar pedir situação
8. Amostra grátis
9. Se qualidade problema, por favor entre em contato [service@hyaindustry.com](mailto:service@hyaindustry.com)

*Esperamos que você possa ser nosso convidado ,China é uma lindo  
Esperamos que nós posso crescer acima o negócio juntos e desenvolve melhor e moda colchão*

## Fair



## Consumer Evaluation

  
Zhejiang Hya Industry Co., Ltd  
浙江恒亚实业有限公司

**Customer Feedback Report**

Please fill in your contact information so that we can contact you and follow your advice. Fill out this form should be fax or e-mail to our company.

Company	SPUNGE MESH FACTORY	Name	
Cooperation period	Years	Time	2015-12-04

Dear customer, thanks for your supporting in our company. In order to improve our services and products quality to full your need, we need your valuable suggestions and comments.

1) Do you satisfy our quality these years? YES EVERY THING IS OK

2) Do you satisfy our quantity each order? YES EVERY THING IS OK

3) Do you satisfy our packing? YES EVERY THING IS OK

4) Do you satisfy our delivery time? YES EVERY THING IS OK

5) Do you satisfy our service? YES EVERY THING IS OK

6) Is there many claim in these year? NO

Is there you satisfy with our solution? YES EVERY THING IS OK

Comments/suggestions: we are satisfied it

*[Signature]*  
22/12/2015



  
Zhejiang Hya Industry Co., Ltd  
浙江恒亚实业有限公司

**Customer Feedback Report**

Please fill in your contact information so that we can contact you and follow your advice. Fill out this form should be fax or e-mail to our company.

Company	PING'S DISTRIBUTION TRADE LIMITED	Name	DIRECTOR
Cooperation period	Years	Time	2015-12-7

Dear customer, thanks for your supporting in our company. In order to improve our services and products quality to full your need, we need your valuable suggestions and comments.

1) Do you satisfy our quality these years? Yes

2) Do you satisfy our quantity each order? YES

3) Do you satisfy our packing? YES

4) Do you satisfy our delivery time? YES Very Good

5) Do you satisfy our service? VERY GOOD

6) Is there many claim in these year? ZERO

Is there you satisfy with our solution?

Comments/suggestions: very reliable company. I feel very confident working with them. they are efficient lady.

PING'S DISTRIBUTION TRADE LIMITED  
38 WILLOW GROVE STREET  
GROSVORE DUBLIN  
21/12/2015

  
Zhejiang Hya Industry Co., Ltd  
浙江恒亚实业有限公司

**Customer Feedback Report**

Please fill in your contact information so that we can contact you and follow your advice. Fill out this form should be fax or e-mail to our company.

Company	THE SUIKAWA COMPANY LTD INC	Name	
Cooperation period	Years	Time	2015-12-7

Dear customer, thanks for your supporting in our company. In order to improve our services and products quality to full your need, we need your valuable suggestions and comments.

1) Do you satisfy our quality these years? YES

2) Do you satisfy our quantity each order? YES

3) Do you satisfy our packing? YES

4) Do you satisfy our delivery time? YES

5) Do you satisfy our service? YES

6) Is there many claim in these year? NO

Is there you satisfy with our solution?

Comments/suggestions: we are satisfied with your service.

*[Signature]*



Fabricamos todos os tipos de tecido de malha jacquard de colchão (cânhamo, orgânico, tencel, algodão, retardador de chama, aloe vera, bambu, tecido de resfriamento, cobre e assim por diante) tecido de tricot de colchão, tecido de cetim de colchão, tecido de colchão tc, capa de colchão, travesseiro Capa e tecido de borda de colchão, capa de base de colchão e componentes de colchão (tecido antiderrapante, fio, almofada de flet, fita...), tecido stichbond, tecido antiderrapante, tecido retardador de chama, cortina