

## Quick Details

□□	□□□□ □□ □□ + □ + □□□□□ + □□□
□□	□□□ □□□
□□	□□□□ □□, □□ □□, □□ □□
□□	□
□□	□□□ □□
□□	□□□ □□□ □□ □ □□□□.
□□	□□□ □□
□□□	□□ □□
□□	LC, DA, DP, TT □

□□□□□ □□ □□□ □□□ □□, □□□ □ □□□□

□□ □□□ □□□□ □□, □□□ □□ □□ □□, □□□ □ □ □□□ □□□□.

□□□□ KD □□

1. □□

□□ 2. □□□ □□

□□ 3. □□□ □□□ □□□□

4. □□ □□ (□□ □ □□□□ □□□)

□□□ □□ □□□ □□ □□ □□□ □□□□□. □□ □□□ □□□ □□ □□□□□□.

[□□□-□□□-□-□□](#)

[□□ /Cotton □□□□ □□](#)

[□□-□□□□-□□-□□-□□](#)

## Product Details



Quality Control

















fir meter and steady yarn

( )号机生产记录表

日期	班次	产量	质量	备注	日期	班次	产量	质量	备注
10/1	1	2500	25.5		10/1	2	2500	25.5	
10/2	1	2500	25.5		10/2	2	2500	25.5	
10/3	1	2500	25.5		10/3	2	2500	25.5	
10/4	1	2500	25.5		10/4	2	2500	25.5	
10/5	1	2500	25.5		10/5	2	2500	25.5	
10/6	1	2500	25.5		10/6	2	2500	25.5	
10/7	1	2500	25.5		10/7	2	2500	25.5	
10/8	1	2500	25.5		10/8	2	2500	25.5	
10/9	1	2500	25.5		10/9	2	2500	25.5	
10/10	1	2500	25.5		10/10	2	2500	25.5	
10/11	1	2500	25.5		10/11	2	2500	25.5	
10/12	1	2500	25.5		10/12	2	2500	25.5	
10/13	1	2500	25.5		10/13	2	2500	25.5	
10/14	1	2500	25.5		10/14	2	2500	25.5	
10/15	1	2500	25.5		10/15	2	2500	25.5	
10/16	1	2500	25.5		10/16	2	2500	25.5	
10/17	1	2500	25.5		10/17	2	2500	25.5	
10/18	1	2500	25.5		10/18	2	2500	25.5	
10/19	1	2500	25.5		10/19	2	2500	25.5	
10/20	1	2500	25.5		10/20	2	2500	25.5	
10/21	1	2500	25.5		10/21	2	2500	25.5	
10/22	1	2500	25.5		10/22	2	2500	25.5	
10/23	1	2500	25.5		10/23	2	2500	25.5	
10/24	1	2500	25.5		10/24	2	2500	25.5	
10/25	1	2500	25.5		10/25	2	2500	25.5	
10/26	1	2500	25.5		10/26	2	2500	25.5	
10/27	1	2500	25.5		10/27	2	2500	25.5	
10/28	1	2500	25.5		10/28	2	2500	25.5	
10/29	1	2500	25.5		10/29	2	2500	25.5	
10/30	1	2500	25.5		10/30	2	2500	25.5	

production records



checking width



try best to load full



design checking



fabric quality check



design /quantity check



weight checking

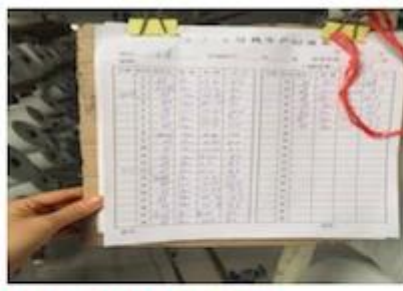


width checking

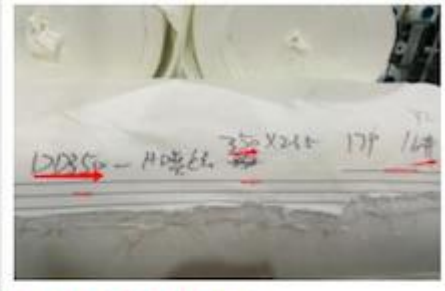
# Quality Control



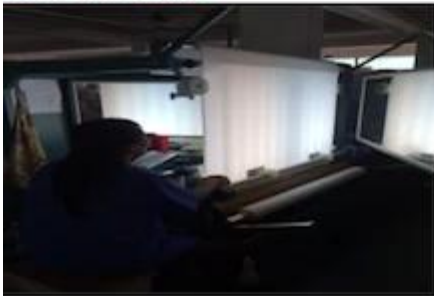
**BEST MATERIAL**



**DETAILS NOTE DOWN**



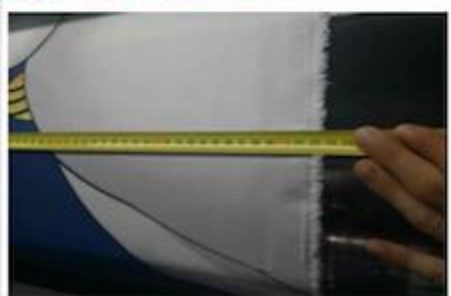
**DETAILS ON FABRIC**



**FABRIC FIRST TIME CHECKING**



**WEIGHT CHECKING**



**WIDTH CHECKING**



**DESIGN CHECKING**



**QUANTITY CHECKING**



**TRY BEST TO LOAD FULL**

# Our Factory



Packing



## Our Service

1. 15 日 内 可 以 开 始 工 作
  2. 可 以 提 供 一 切 的 服 务
  3. 可 以 提 供 一 切 的 服 务
  4. 可 以 提 供 一 切 的 服 务
  5. 可 以 提 供 一 切 的 服 务
  6. 可 以 提 供 一 切 的 服 务
  7. 可 以 提 供 一 切 的 服 务
  8. 可 以 提 供 一 切 的 服 务
  9. 可 以 提 供 一 切 的 服 务 [service@hyaindustry.com](mailto:service@hyaindustry.com)
- 可 以 提 供 一 切 的 服 务。

## Fair



## Consumer Evaluation

  
Zhejiang Hya Industry Co., Ltd  
浙江恒亚实业有限公司

**Customer Feedback Report**

*Please fill in your contact information so that we can contact you and follow your advice. Fill out this form should be fax or e-mail to our company.*

Company	SPUNGE MESH FACTORY	Name	
Cooperation period	Years	Time	2015-12-4

Dear customer, thanks for your supporting in our company. In order to improve our services and products quality to full your need, we need your valuable suggestions and comments.

1) Do you satisfy our quality these years? YES EVERY THING IS OK

2) Do you satisfy our quantity each order? YES EVERY THING IS OK

3) Do you satisfy our packing? YES EVERY THING IS OK

4) Do you satisfy our delivery time? YES EVERY THING IS OK

5) Do you satisfy our service? YES EVERY THING IS OK

6) Is there many claim in these year? NO

Is Are you satisfy with our solution? YES EVERY THING IS OK

Comments/suggestions: we are satisfied it

*[Signature]*  
22/12/2015



  
Zhejiang Hya Industry Co., Ltd  
浙江恒亚实业有限公司

**Customer Feedback Report**

*Please fill in your contact information so that we can contact you and follow your advice. Fill out this form should be fax or e-mail to our company.*

Company	PING'S DISTRIBUTION TRADE LIMITED	Name	DIRECTOR
Cooperation period	Years	Time	2015-12-7

Dear customer, thanks for your supporting in our company. In order to improve our services and products quality to full your need, we need your valuable suggestions and comments.

1) Do you satisfy our quality these years? Yes

2) Do you satisfy our quantity each order? YES

3) Do you satisfy our packing? YES

4) Do you satisfy our delivery time? YES Very Good

5) Do you satisfy our service? VERY GOOD

6) Is there many claim in these year? ZERO

Is Are you satisfy with our solution? YES

Comments/suggestions: very reliable company. I feel very confident working with them. easy affairment lady.

PING'S DISTRIBUTION TRADE LIMITED  
300 Wellington Street  
Greenside Tisbury  
217

  
Zhejiang Hya Industry Co., Ltd  
0000000000

**Customer Feedback Report**

*Please fill in your contact information so that we can contact you and follow your advice. Fill out this form should be fax or e-mail to our company.*

Company	DE BUREAU VAN DER Grinten	Name	
Cooperation period	Years	Time	2015-12-7

Dear customer, thanks for your supporting in our company. In order to improve our services and products quality to full your need, we need your valuable suggestions and comments.

1) Do you satisfy our quality these years? YES

2) Do you satisfy our quantity each order? YES

3) Do you satisfy our packing? YES

4) Do you satisfy our delivery time? YES

5) Do you satisfy our service? YES

6) Is there many claim in these year? NO

Is Are you satisfy with our solution? YES

Comments/suggestions: we are satisfied with your service.

*[Signature]*  


000 00 000 0000 000 00 00(00, 000, 00, 0, 000, 000 00, 000, 00 00, 00 0)0 000 0000. 0000 000 00, 0000 00 00, 0000 tc 00, 0000 00, 00 00 0 0000 000 000, 0000 000 00 0 0000 00 00(000 00 000, 0, 00 00, 00 0...)