

## Quick Details

Matériel	100% Polyester
Largeur	comme exigence du client
Application	chaussures, sacs, colis, hometextile, matelas
<b>Article</b>	<b>Évaluer</b>
lester	60-250gsm
Capacité d'approvisionnement	500000M/MOIS
Couleur	Accédant à la demande
AIGUILLES	7.10.14
Goûter	échantillon gratuit à envoyer
Caractéristique	Traitement ignifuge, respirant, antidérapant
Motif	Teint, impression, revêtement imperméable
Forfait	Paquet de rouleau
Paielement	LC, DA, DP, TT ET AINSI DE SUITE

Le tissu non tissé précollé est recyclé à partir de bouteilles de déchets et peut être largement utilisé dans les sacs, les rideaux, les matelas à ressorts, les chaussures, etc.

Nous proposons également de nombreux types de produits pour votre choix. Veuillez cliquer sur ces mots et trouver votre besoin :

[Usine de non tissé Rpet Stichbond](#)  
[Fabricant de tissu polyester Stichbond](#)  
[Tissu Stichbond ignifuge en gros](#)

## Product Details



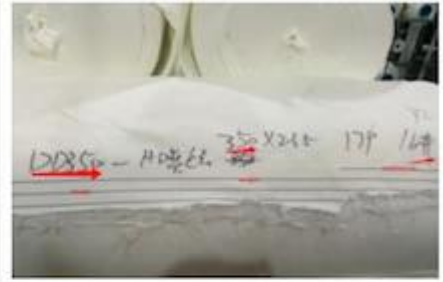
Quality Control



**BEST MATERIAL**



**DETAILS NOTE DOWN**



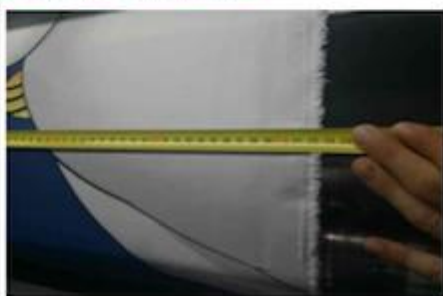
**DETAILS ON FABRIC**



**FABRIC FIRST TIME CHECKING**



**WEIGHT CHECKING**



**WIDTH CHECKING**



**DESIGN CHECKING**



**QUANTITY CHECKING**



**TRY BEST TO LOAD FULL**

## Our Factory



## Packing



## Our Service

- 1,15 ans spécialisé dans le tissu et les composants du matelas
2. La qualité d'abord au meilleur prix
3. Assurer la quantité et le délai de livraison
4. Continuer à améliorer les nouveaux designs et les nouveaux produits
5. Recherche nouveau et élément de mode pour le client
6. Mélangez tous les types de produits dans un récipient
7. Conserver Informer commande situation
8. Échantillon gratuit
9. En cas de problème de qualité, veuillez contacter [service@hyaindustry.com](mailto:service@hyaindustry.com)

*Nous espérons que vous pourrez être notre invité ,Chine est un belle  
Nous espérons que nous boîte grandir en haut Entreprise ensemble et développer meilleur et mode le  
matelas*

## Fair



## Consumer Evaluation

  
Zhejiang Hya Industry Co., Ltd  
浙江恒亚实业有限公司

**Customer Feedback Report**

Please fill in your contact information so that we can contact you and follow your advice. Fill out this form should be fax or e-mail to our company.

Company	SPUNGE MESH FACTORY	Name	Johnson
Cooperation period	Years	Time	2013-12-n

Dear customer, thanks for your supporting in our company. In order to improve our service and products quality to full your need, we need your valuable suggestions and comments.

1) Do you satisfy our quality these years? YES EVERY THING IS OK

2) Do you satisfy our quantity each order? YES EVERY THING IS OK

3) Do you satisfy our packing? YES EVERY THING IS OK

4) Do you satisfy our delivery time? YES EVERY THING IS OK

5) Do you satisfy our service? YES EVERY THING IS OK

6) Is there many claim in those year? NO

Is there you satisfy with our solution? YES EVERY THING IS OK

Comments/suggestions: we are satisfied it

*Johnson*  
22/12/2015



  
Zhejiang Hya Industry Co., Ltd  
浙江恒亚实业有限公司

**Customer Feedback Report**

Please fill in your contact information so that we can contact you and follow your advice. Fill out this form should be fax or e-mail to our company.

Company	PING'S DISTRIBUTION TRADE LIMITED	Name	Director
Cooperation period	Years	Time	2013-12-7

Dear customer, thanks for your supporting in our company. In order to improve our service and products quality to full your need, we need your valuable suggestions and comments.

1) Do you satisfy our quality these years? Yes

2) Do you satisfy our quantity each order? YES

3) Do you satisfy our packing? YES

4) Do you satisfy our delivery time? YES Very Good

5) Do you satisfy our service? VERY GOOD

6) Is there many claim in those year? ZERO

Is there you satisfy with our solution? YES

Comments/suggestions: very reliable company. I feel very confident working with them. they are a professional lady.

PING'S DISTRIBUTION TRADE LIMITED  
300 Williamstown Street  
Greensboro North  
2117

  
Zhejiang Hya Industry Co., Ltd  
浙江恒亚实业有限公司

**Customer Feedback Report**

Please fill in your contact information so that we can contact you and follow your advice. Fill out this form should be fax or e-mail to our company.

Company	THE SUIKAWA COMPANY LTD INC	Name	Director
Cooperation period	Years	Time	2013-12-7

Dear customer, thanks for your supporting in our company. In order to improve our service and products quality to full your need, we need your valuable suggestions and comments.

1) Do you satisfy our quality these years? YES

2) Do you satisfy our quantity each order? YES

3) Do you satisfy our packing? YES

4) Do you satisfy our delivery time? YES

5) Do you satisfy our service? YES

6) Is there many claim in those year? NO

Is there you satisfy with our solution? YES

Comments/suggestions: we are satisfied with your service.

*Johnson*  


Nous fabriquons toutes sortes de tissus tricotés jacquard pour matelas (chanvre, bio, tencel, coton, ignifuge, aloe vera, bambou, tissu rafraîchissant, cuivre, etc.) couverture et tissu de bordure de matelas, couverture de base de matelas et composants de matelas (tissu antidérapant, fil, rembourrage, ruban ...), tissu stichbond, tissu antidérapant, tissu ignifuge, rideau