

Quick Details

Matériel	100% Polyester
largeur	210-280CM
application	UTILISATION POUR MATELAS ET LITERIE DRAP ET MAISON, COUETTE MATELAS
projet	évaluer
lester	50-120gsm
Capacité d'enchère	1000000m/mois
Couleur	Selon la demande
caractéristique	SOFT TOUCH, IMPRESSION COULEUR, PLUS ÉCONOMIQUE
goûter	Échantillon gratuit à envoyer
forfait	EMBALLAGE EN ROULEAU
Paielement	LC, DA, DP, TT et ainsi de suite

Tissu de brosse en polyester généralement largement utilisé pour les matelas à ressorts/filet en mousse/éponge, et tissu matelassé, linge de lit, Hometextile, il y a plus de 5000 modèles que vous pouvez choisir.

Nous offrons également une variété de produits au choix. Cliquez sur ces mots et trouvez vos besoins :

[Matelas tissus fabricant Chine](#)

[Accueil textile tissus fabricant](#)

[Microfibre matelas tissus Chine fournisseur](#)

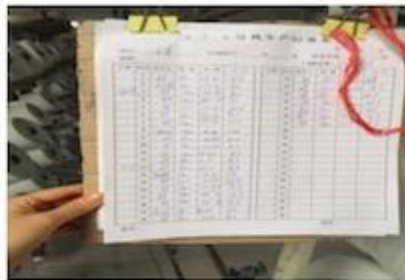
Product Details



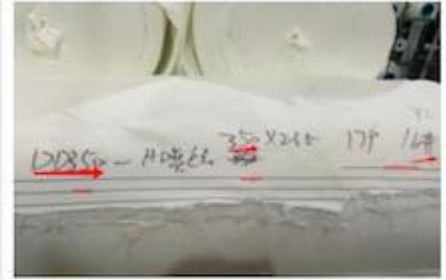
Quality Control



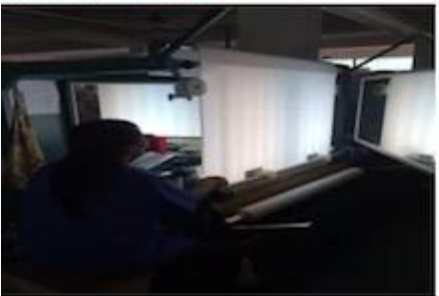
BEST MATERIAL



DETAILS NOTE DOWN



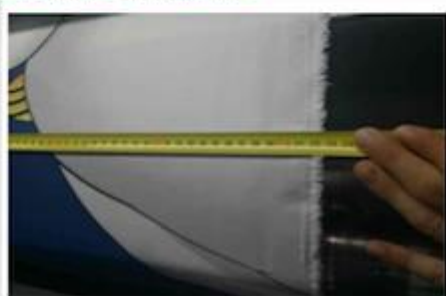
DETAILS ON FABRIC



FABRIC FIRST TIME CHECKING



WEIGHT CHECKING



WIDTH CHECKING



DESIGN CHECKING



QUANTITY CHECKING



TRY BEST TO LOAD FULL

Our Factory



Packing



Our Service

- 1,15 ans spécialisé dans le tissu et les composants du matelas
2. La qualité d'abord au meilleur prix
3. Assurer la quantité et le délai de livraison
4. Continuer à améliorer les nouveaux designs et les nouveaux produits
5. Recherche nouveau et élément de mode pour le client
6. Mélangez tous les types de produits dans un récipient
7. Conserver Informer commande situation
8. Échantillon gratuit
9. En cas de problème de qualité, veuillez contacter service@hyaindustry.com

*Nous espérons que vous pourrez être notre invité ,Chine est un belle
Nous espérons que nous boîte grandir en haut Entreprise ensemble et développer meilleur et mode le
matelas*

Fair



Consumer Evaluation


Zhejiang Hya Industry Co., Ltd
浙江恒亚实业有限公司

Customer Feedback Report

Please fill in your contact information so that we can contact you and follow your advice. Fill out this form should be fax or e-mail to our company.

Company	SPUNGE MESH FACTORY	Name	Johnson
Cooperation period	Years	Time	2013-12-04

Dear customer, thanks for your supporting in our company. In order to improve our service and products quality to full your need, we need your valuable suggestions and comments.

1) Do you satisfy our quality these years? YES EVERY THING IS OK

2) Do you satisfy our quantity each order? YES EVERY THING IS OK

3) Do you satisfy our packing? YES EVERY THING IS OK

4) Do you satisfy our delivery time? YES EVERY THING IS OK

5) Do you satisfy our service? YES EVERY THING IS OK

6) Is there many claim in these year? NO

Is there you satisfy with our solution? YES EVERY THING IS OK

Comments/suggestions: we are satisfied it

Johnson
22/12/2015




Zhejiang Hya Industry Co., Ltd
浙江恒亚实业有限公司

Customer Feedback Report

Please fill in your contact information so that we can contact you and follow your advice. Fill out this form should be fax or e-mail to our company.

Company	PING'S DISTRIBUTION TRADE LIMITED	Name	Director
Cooperation period	Years	Time	2013-12-7

Dear customer, thanks for your supporting in our company. In order to improve our service and products quality to full your need, we need your valuable suggestions and comments.

1) Do you satisfy our quality these years? Yes

2) Do you satisfy our quantity each order? YES

3) Do you satisfy our packing? YES

4) Do you satisfy our delivery time? YES Very Good

5) Do you satisfy our service? VERY GOOD

6) Is there many claim in these year? ZERO

Is there you satisfy with our solution? YES

Comments/suggestions: very reliable company. I feel very confident working with them. they are a professional lady.

PING'S DISTRIBUTION TRADE LIMITED
300 Williamstown Street
Greensboro North Carolina
27409


Zhejiang Hya Industry Co., Ltd
浙江恒亚实业有限公司

Customer Feedback Report

Please fill in your contact information so that we can contact you and follow your advice. Fill out this form should be fax or e-mail to our company.

Company	THE SUIKAWA COMPANY LTD INC	Name	Director
Cooperation period	Years	Time	2013-12-7

Dear customer, thanks for your supporting in our company. In order to improve our service and products quality to full your need, we need your valuable suggestions and comments.

1) Do you satisfy our quality these years? YES

2) Do you satisfy our quantity each order? YES

3) Do you satisfy our packing? YES

4) Do you satisfy our delivery time? YES

5) Do you satisfy our service? YES

6) Is there many claim in these year? NO

Is there you satisfy with our solution? YES

Comments/suggestions: we are satisfied with your service.

Johnson



Nous fabriquons toutes sortes de tissus tricotés jacquard pour matelas (chanvre, bio, tencel, coton, ignifuge, aloe vera, bambou, tissu rafraîchissant, cuivre, etc.) couverture et tissu de bordure de matelas, couverture de base de matelas et composants de matelas (tissu antidérapant, fil, rembourrage, ruban ...), tissu stichbond, tissu antidérapant, tissu ignifuge, rideau