

## Quick Details

Material	100% Cotton TC 100% Cotton 100% Cotton.....
Length	210-240cm
Width	100cm
Weight	130-800GSM
Quantity	300000m/roll
Color	White
Pattern	Plain
Texture	Soft
Usage	Home Textiles
Origin	China
Model	LC100DA100DP100TT100

100% Cotton TC 100% Cotton 100% Cotton.....

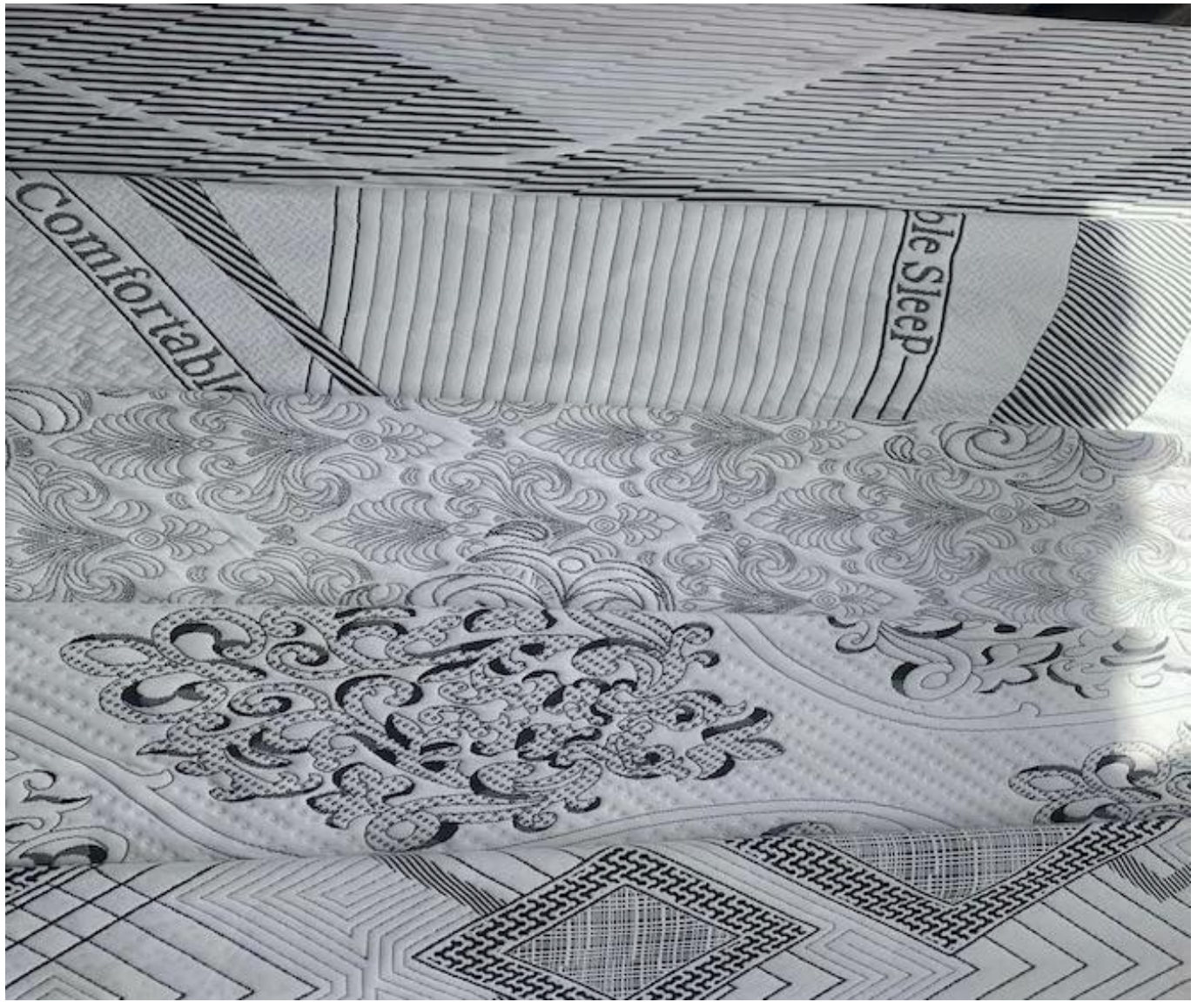
100% Cotton TC 100% Cotton 100% Cotton.....

100% Cotton TC 100% Cotton 100% Cotton.....

100% Cotton TC 100% Cotton 100% Cotton.....

100% Cotton TC 100% Cotton 100% Cotton.....

## Product Details





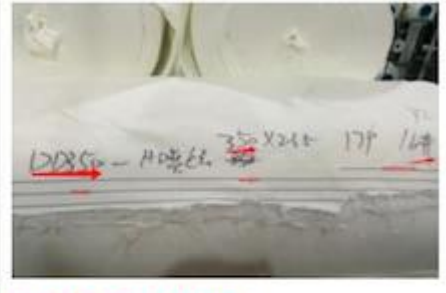
Quality Control



**BEST MATERIAL**



**DETAILS NOTE DOWN**



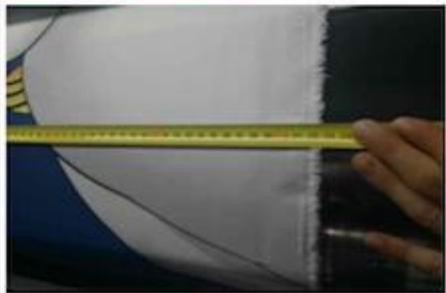
**DETAILS ON FABRIC**



**FABRIC FIRST TIME CHECKING**



**WEIGHT CHECKING**



**WIDTH CHECKING**



**DESIGN CHECKING**



**QUANTITY CHECKING**



**TRY BEST TO LOAD FULL**

**Our Factory**



Packing



## Our Service

1. 15 年 經 驗
2. 專 業 團 隊
3. 誠 信 經 營
4. 專 業 設 備 及 技 術 人 員
5. 質 量 保 證
6. 專 業 設 計 及 打 樣
7. 專 業 生 產 及 裝 配
8. 專 業 售 後 服 務
9. 專 業 團 隊 服 務 [service@hyaindustry.com](mailto:service@hyaindustry.com)

XXXXXXXXXXXXXXXX XXXX X XX XXXX  
XXXXXXXXXX XX XX XX XX XX XX XXXX X XX XX

# Fair



# Consumer Evaluation

  
**Zhejiang Hya Industry Co., Ltd**  
 浙江恒亚实业有限公司

**Customer Feedback Report**

*Please fill in your contact information so that we can contact you and follow your advice. Fill out this form should be fax or e-mail to our company.*

Company	SPUNGE MESH FACTORY	Name	
Cooperation period	Years	Time	2015-12-4

Dear customer, thanks for your supporting in our company. In order to improve our services and products quality to full your need, we need your valuable suggestions and comments.

1) Do you satisfy our quality these years? **YES EVERY THING IS OK**

2) Do you satisfy our quantity each order? **YES EVERY THING IS OK**

3) Do you satisfy our packing? **YES EVERY THING IS OK**

4) Do you satisfy our delivery time? **YES EVERY THING IS OK**

5) Do you satisfy our service? **YES EVERY THING IS OK**

6) Is there many claim in these year? **NO**

Is there you satisfy with our solution? **YES EVERY THING IS OK**

Comments/suggestions: **we are satisfied it**

*[Signature]*  
22/12/2015



  
**Zhejiang Hya Industry Co., Ltd**  
 浙江恒亚实业有限公司

**Customer Feedback Report**

*Please fill in your contact information so that we can contact you and follow your advice. Fill out this form should be fax or e-mail to our company.*

Company	PING'S DISTRIBUTION TRADE LIMITED	Name	DIRECTOR
Cooperation period	Years	Time	2015-12-7

Dear customer, thanks for your supporting in our company. In order to improve our services and products quality to full your need, we need your valuable suggestions and comments.

1) Do you satisfy our quality these years? **Yes**

2) Do you satisfy our quantity each order? **YES**

3) Do you satisfy our packing? **YES**

4) Do you satisfy our delivery time? **YES Very Good**

5) Do you satisfy our service? **VERY GOOD**

6) Is there many claim in these year? **ZERO**

Is there you satisfy with our solution? **NO**

Comments/suggestions: **very reliable company. I feel very confident working with them. easy affairment lady.**

**PING'S DISTRIBUTION TRADE LIMITED**  
38 WILLOW GROVE STREET  
GROVE ROAD  
217

  
**Zhejiang Hya Industry Co., Ltd**  
 浙江恒亚实业有限公司

**Customer Feedback Report**

*Please fill in your contact information so that we can contact you and follow your advice. Fill out this form should be fax or e-mail to our company.*

Company	DE BUREAU VAN DER GRIJN	Name	
Cooperation period	Years	Time	2015-12-7

Dear customer, thanks for your supporting in our company. In order to improve our services and products quality to full your need, we need your valuable suggestions and comments.

1) Do you satisfy our quality these years? **Yes**

2) Do you satisfy our quantity each order? **Yes**

3) Do you satisfy our packing? **Yes**

4) Do you satisfy our delivery time? **Yes**

5) Do you satisfy our service? **Yes**

6) Is there many claim in these year? **NO**

Is there you satisfy with our solution? **Yes**

Comments/suggestions: **we are satisfied with your service.**

*[Signature]*



.....stichbond